

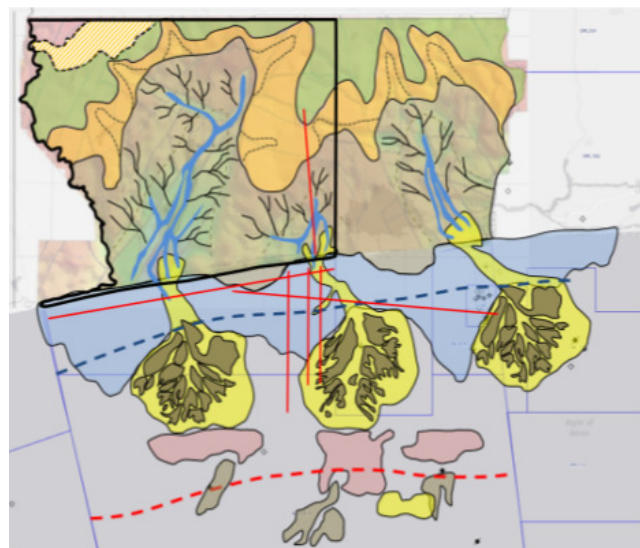
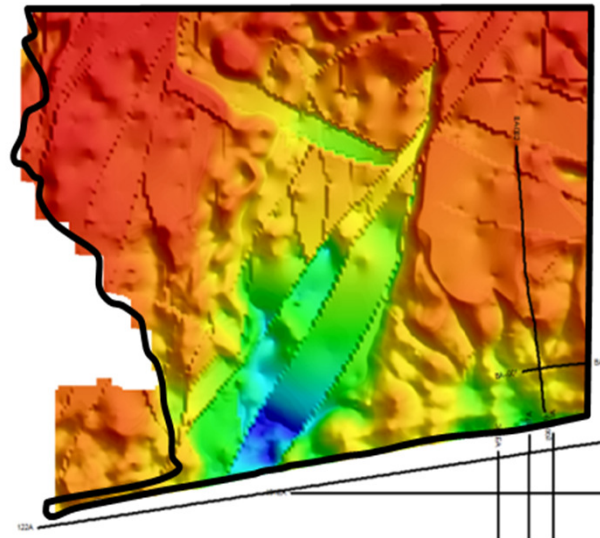
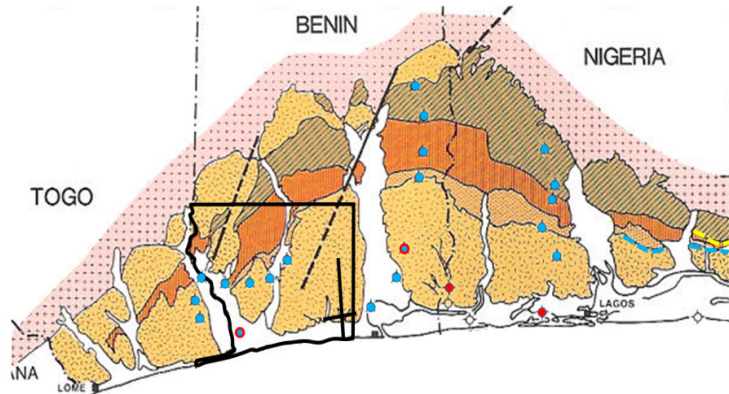
Benin Block B farm-in opportunity

Elephant Oil Ltd are pleased to offer a farm-in opportunity to Block B, onshore Benin.

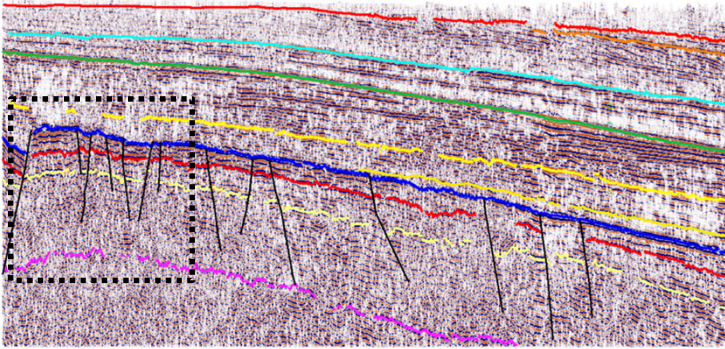
The block is located in the prospective Dahomey Embayment, containing thick Mesozoic sediments and large rift structures.

Numerous structural & stratigraphic leads have been mapped out using CGG gravity gradiometry and 2D seismic data.

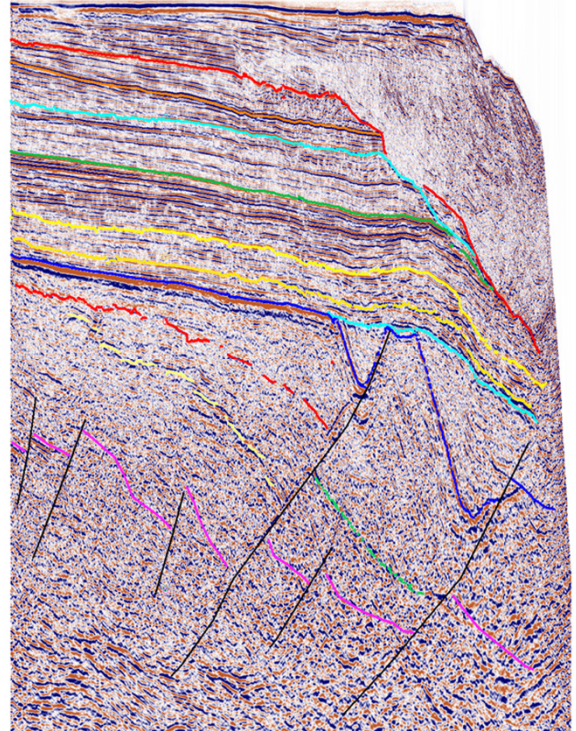
Additional 2D seismic is now planned over these structures to delineate drilling locations.



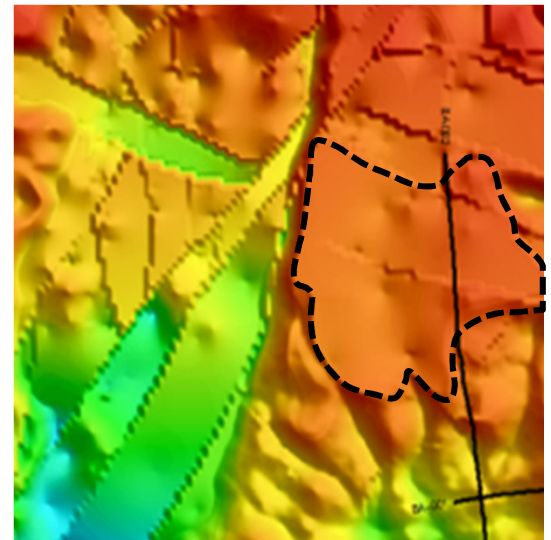
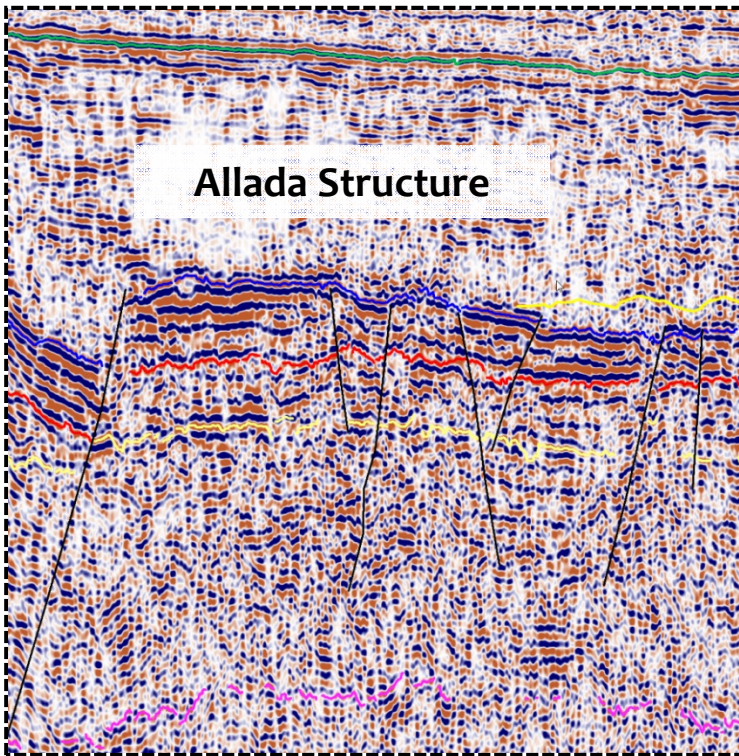
Onshore Benin



Offshore Benin



Allada Structure



Interested parties to contact:

PVE Consulting Limited
Berkeley Square House
Berkeley Square
London, W1J 6BD
www.nventures.com

PetroVannin UK Ltd
3 Fir Tree Close
Esher
Surrey, KT10 9DS
www.petrovannin.co.uk

Elephant Oil SA
L'ancienne Maison de La Radio
Lot Numero 12
Cotonou, Benin
www.elephant-oil.com

Elephant Oil



PetroVannin



PVE
CONSULTING LTD LONDON
EAP UPSTREAM BUSINESS DEVELOPMENT



Benin Block B farm-in opportunity

Elephant Oil Ltd are pleased to offer a farm-in opportunity to Block B, onshore Benin.

The block is located in the prospective Dahomey Embayment, containing thick Mesozoic sediments and large rift structures.

Numerous structural & stratigraphic leads have been mapped out using CGG gravity gradiometry and 2D seismic data.

Additional 2D seismic is now planned over these structures to delineate drilling locations.

